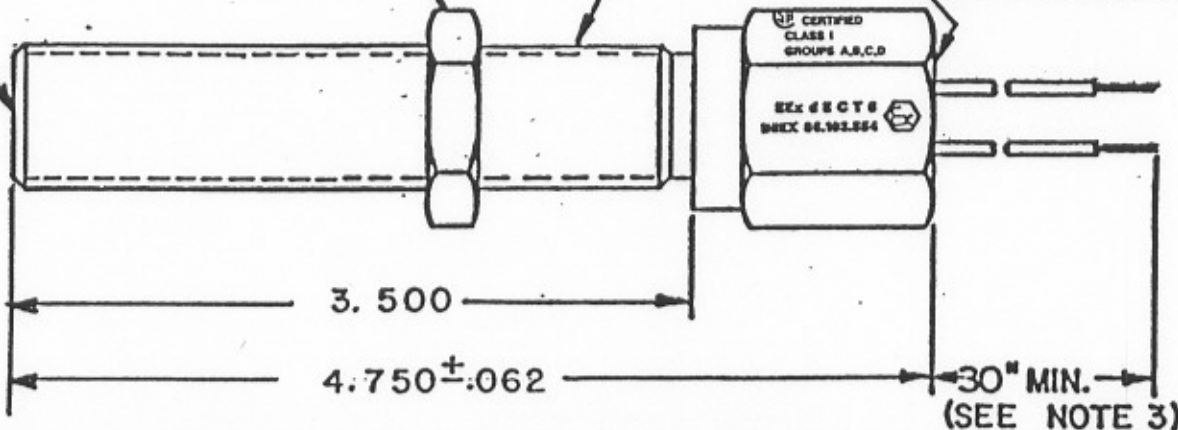


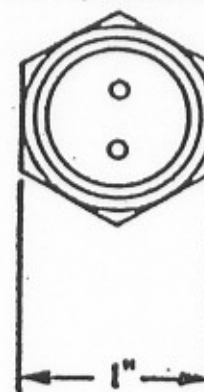
BLIND END HOUSING
(POLE PIECE DIA. .094 REF.)

$\frac{3}{4}$ -20 UNEF-2A
LOCKNUT

$\frac{1}{2}$ NPT



REVISIONS			
LTR	DESCRIPTION	DATE	APPD
A	ADDED STENCIL (CENELEC)	HW 12-12-89	1237
B	ECN 1872	KP 1-16-95	lec
C	ECN 2236	KP 3/3/99	lec



TEMPERATURE RANGE	OUTPUT VOLTAGE PEAK TO PEAK	DC RESISTANCE OHMS	INDUCTANCE MILLIHENRYS	OUTPUT CONNECTION	INSULATION RESISTANCE	NET WEIGHT
-100°F TO +200°F MAX. AMBIENT OR MTG. TEMP	23-33 VOLTS (SEE NOTE 1)	170-210 AT 75°F	29 NOM.	NO.18 AWG LEADS (SEE NOTE 2)	100 MEGOHMS MIN. AT 500VDC, COIL TO HOUSING	

NOTES:

1. TESTED AT 1000 INCHES/SECOND WITH A 20 PITCH, 30 TOOTH GEAR, 0.005" CLEARANCE AND 100,000 OHMS.
2. WITH APPROACH OF FERROUS METAL, WHITE LEAD IS POSITIVE WITH RESPECT TO BLACK LEAD.
3. UP TO 100 FT. OPTIONAL

CENELEC APPROVED
Eex dIICT6
INEX 86.103.554

CERTIFIED
CLASS 1
GROUPS A,B,C,D

CONSTRUCTION:

HOUSING - 303 STAINLESS STEEL
POTTING - EPOXY RESIN

UNLESS OTHERWISE SPECIFIED
DIMENSIONS ARE IN INCHES
TOLERANCES ARE

FRACT.	DES.	ANGLES
$\pm 1/24$.RXX $\pm .008$.XX $\pm .01$	$\pm 1/2^\circ$

MATERIAL:

FINISH:

DYNALCO[®] CORPORATION
FORT LAUDERDALE, FLORIDA

DRAWN	<i>K. Daigle</i>	DATE	4-22-86
APPROVED	<i>J.D. White</i>		4-22-86

TITLE **OUTLINE & SPECIFICATIONS**
M318 MAGNETIC PICKUP

SCALE	SIZE	DRAWING NUMBER	REV.
NONE	A	8000318	C

DO NOT SCALE THIS DRAWING