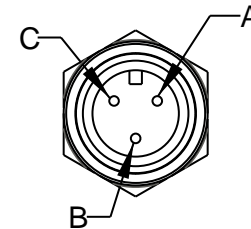
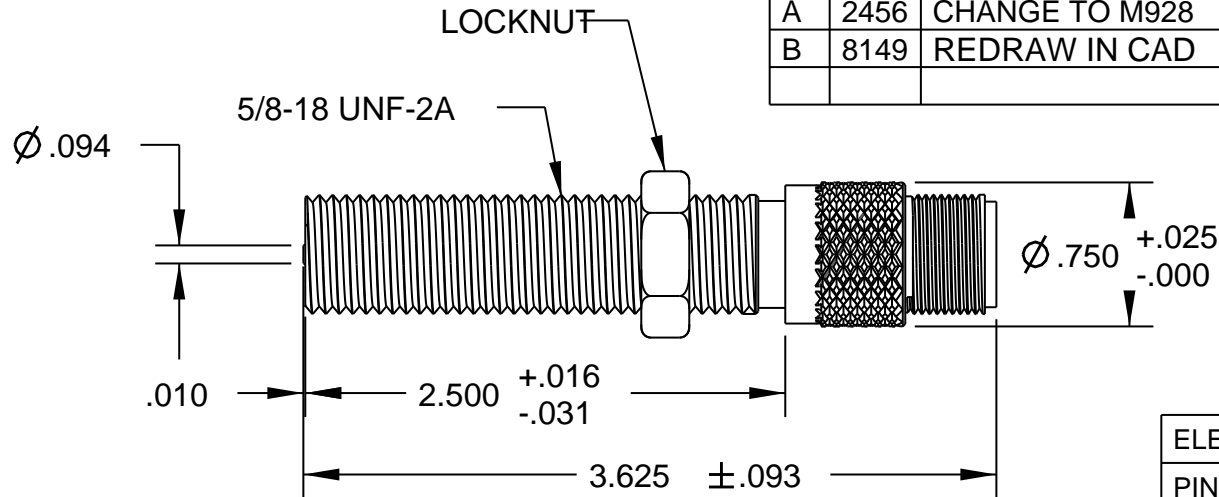


REV	ECN	DESCRIPTION	DATE	DR	CK
A	2456	CHANGE TO M928	10/03/82	KP	LOC
B	8149	REDRAW IN CAD	09/21/12	PF	MG



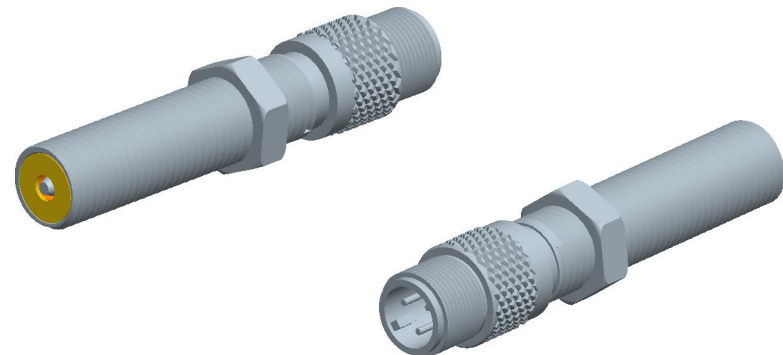
ELECTRICAL CONNECTIONS	
PIN A	+POWER SUPPLY
PIN B	OUTPUT
PIN C	COMMON

**SPECIFICATIONS:**

POWER SUPPLY: 5 TO 15 VDC.  
 OPERATING TEMPERATURE: -40 °F TO +250 °F  
 OUTPUT VOLTAGE: TTL COMPATIBLE, 50 ±10% DUTY CYCLE.  
 LOGIC 0: +0.6V PEAK MAX. WITH 25 mA SINK CURRENT.

LOGIC 1:  $\frac{R_L \times E_s}{R_L + 2K\Omega}$

OUTPUT IMPEDANCE: 2K OHMS.  
 POWER SUPPLY CURRENT: 10 mA. TYPICAL WITH 10 VDC POWER SUPPLY.  
 HOUSING: 303 STAINLESS TEEL.  
 OUTPUT CONNECTOR: MATES WITH MS 3106A-10SL-3S  
 INSULATION RESISTANCE: 100 Mohm MIN. AT 50 VDC (PIN "A" TO HOUSING).



**WARNING:**

**INCORRECT WIRING MAY CAUSE PERMANENT DAMAGE TO PICKUP.**

THIS DOCUMENT, ALL INFORMATION CONTAINED IN AND ALL INFORMATION RELATED TO THE PROPERTY OF DYNALCO CONTROLS, IS CONFIDENTIAL TO IT AND NO PART THEREOF NOR ANY SUBSTANTIAL INFORMATION MAY BE COPIED, DISSEMINATED OR USED IN ANY MANNER WHATSOEVER WITHOUT THE WRITTEN CONSENT OF DYNALCO AND IS TO BE RETURNED TO DYNALCO UPON REQUEST.

TOLERANCES	ANGLES
FRACT. DEC.	±1/2°
±1/64 .XXX±.005	
.XX±.01	

MATERIAL

FINISH

THIRD ANGLE PROJECTION		Sheet 1 of 1	
<b>DYNALCO</b>			
MODEL	M928	DRAWN	PF
PATH	MPROD\PICKUPS\M928	APPROVED	MG
TITLE MAGNETIC PICKUP, MODEL M928			
DATE	08/14/98	REV	B
		A	800-0928