

4

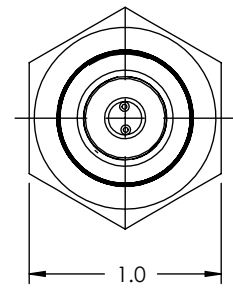
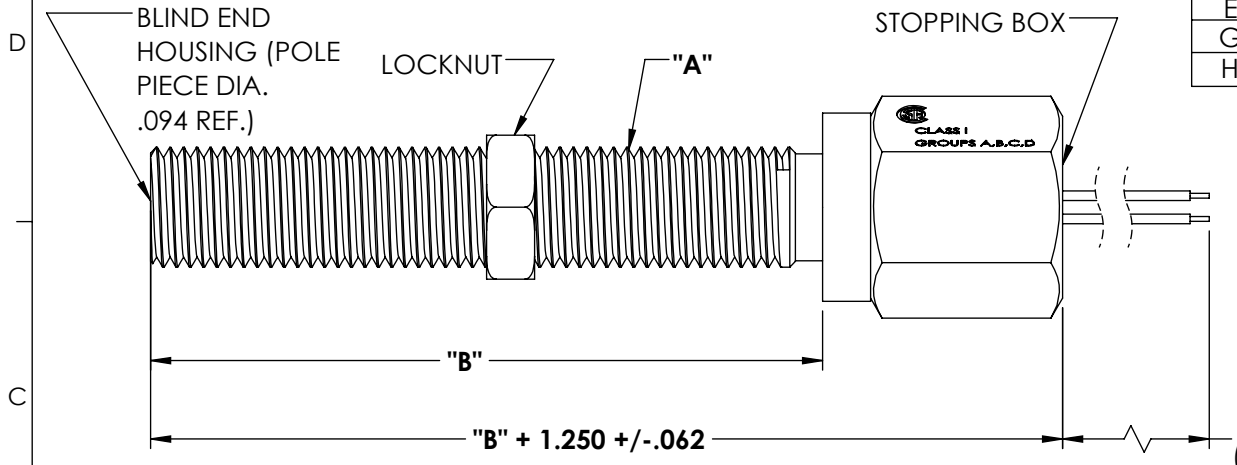
3

2

1

SCHEDULE DRAWING
 No modifications permitted without reference to the Notified Body.

REV	ECN	DESCRIPTION	DATE	DR	CK
A	1237	ADDED STENCIL (CENELEC) HW	12/12/89	KP	LOC
B	1872		01/16/95	KP	LOC
C	2236		03/03/99	KP	LOC
D	2611	ADD ATEX NOTES	01/18/11	PF	DW
E	8657	ADD ATEX Gb NOTE. REDRAW IN CAD	08/28/13	PF	AM
G	12695	ADD UKCA LOGO	07/05/23	PC	PV
H	13098	ADD CML 23UKEX1179X	02/12/24	PC	PV



SP CERTIFIED CLASS I GROUPS A,B,C,D

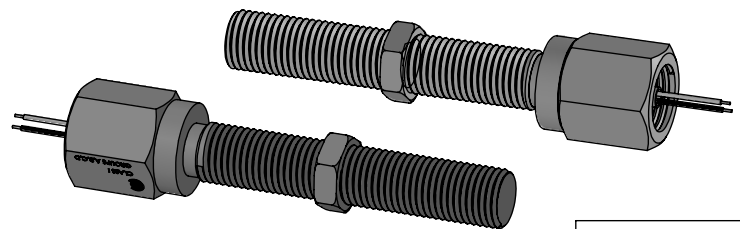
ATEX CERTIFIED

CE 2776 II 2 G

Ex Ex d IIC T6 Gb LCIE 04 ATEX 6019X CML 23UKEX1179X

UK CA 2503

TEMPERATURE RANGE	OUTPUT VOLTAGE (SEE NOTE 1)	DC RESISTANCE AT 75 °F	INDUCTANCE AT 1 KHZ	OUTPUT LEADS (SEE NOTE 2)	INSULATION RESISTANCE AT 500 VDC
-100 °F TO +200 °F	23-33V P-P	170-210 OHMS	29MH. NOM.	AWG 18 UL 1015	100 MEGOHMS MIN. COIL TO HOUSING



INSTRUMENT OR INSTALLATION MUST LIMIT GENERATED VOLTAGE TO 95V RMS (270 VOLTS PEAK TO PEAK) AND MAX. CURRENT TO 0.05 AMPS.

NOTES:

- 1- TESTED AT 1000 INCHES/SECOND WITH AN 20 PITCH, 30 TOOTH GEAR, 0.005" CLEARANCE AND 100 KOHMS.
- 2- WITH APPROACH OF FERROUS METAL, WHITE LEAD IS POSITIVE WITH RESPECT TO BLACK LEAD.
- 3- LEAD LENGTH UP TO 100 FT. OPTIONAL
- 4- FOR LENGTHS NOT NOTED CONSULT FACTORY.

CONSTRUCTION:
 HOUSING ----- 303 STAINLESS STEEL
 POTTING ----- EPOXY RESIN

THIS DOCUMENT, ALL INFORMATION CONTAINED IN AND ALL INFORMATION RELATED TO, IS PROPERTY OF DYNALCO. IS CONFIDENTIAL TO IT AND NO PART THEREOF NOR ANY SUCH INFORMATION MAY BE COPIED, DISSEMINATED OR USED IN ANY MANNER WHATSOEVER WITHOUT THE PRIOR WRITTEN CONSENT OF DYNALCO AND IS TO BE RETURNED TO DYNALCO UPON REQUEST.

UNLESS OTHERWISE SPECIFIED

DIMENSIONS ARE IN INCHES
 DIMENSIONAL TOLERANCES:
 FRACTIONAL ± 1/64
 ANGULAR: ± 1/2°
 XX ± 0.01
 XXX ± 0.005

THIRD ANGLE PROJECTION

DYNALCO

MODEL: M319 DRAWN PF

DATE: 04/22/86 PATH: N:\PROD\PICKUPS\M319 APPROVED HM

MATERIAL: TITLE: OUTLINE AND SPECIFICATIONS MAGNETIC PICKUP

FINISH: SIZE DWG. NO. 800-0319 REV H

DO NOT SCALE DRAWING SCALE 1:1 WEIGHT SHEET 1 OF 2

4

3

2

1

4

3

2

1

SCHEDULE DRAWING
 No modifications permitted
 without reference to the
 Notified Body.

M319	-A	-L3.5	-W10
⇩	⇩	⇩	⇩
BASE NUMBER	DIM "A" THREAD SIZE	DIM "B" THREAD LENGTH	WIRE LENGTH
M319 POLE-PIECE DIAMETER:0.094" OUTPUT:23-33 Vpp ENCAPSULATION(ma) INTRINSICALLY SAFE (ia)	-A: 5/8-18 UNF-2A (MINIMUM) -B: 11/16-24 UNF-2A -C: 3/4-16 UNF-2A -D: 3/4-20 UNEF-2A -E: M16x1.5-6g -F: M18x1.5-6g -G: M20x1.5-6g -Z: CUSTOM THREAD (CONSULT FACTORY)	-L1.5: 1.5 INCHES -L1.8: 1.875 INCHES -L3.5: 3.5 INCHES -L4.5: 4.5 INCHES -L6: 6 INCHES -Lxxx: CUSTOM LENGTH (CONSULT FACTORY)	-Wxxx (5-100FT) 5-100 FT. 1 FT. INCREMENT

D

D

C

C

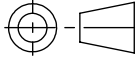

B

B

A

A

THIS DOCUMENT, ALL INFORMATION CONTAINED IN AND ALL INFORMATION RELATED TO, IS PROPERTY OF DYNALCO, IS CONFIDENTIAL TO IT AND NO PART THEREOF NOR ANY SUCH INFORMATION MAY BE COPIED, DISSEMINATED OR USED IN ANY MANNER WHATSOEVER WITHOUT THE PRIOR WRITTEN CONSENT OF DYNALCO AND IS TO BE RETURNED TO DYNALCO UPON REQUEST.

UNLESS OTHERWISE SPECIFIED		 THIRD ANGLE PROJECTION	
DIMENSIONS ARE IN INCHES DIMENSIONAL TOLERANCES: FRACTIONAL ±1/64 ANGULAR: ± 1/2° XX ±0.01 XXX ±0.005			
DATE: 04/22/86	MODEL: M319	DRAWN: PF	
MATERIAL:	PATH: N:\PROD\PICKUPS\M319	APPROVED: HM	
FINISH:	TITLE: OUTLINE AND SPECIFICATIONS MAGNETIC PICKUP	SIZE: A	REV: H
DO NOT SCALE DRAWING	SCALE: 1:1	WEIGHT:	SHEET 2 OF 2

4

3

2

1