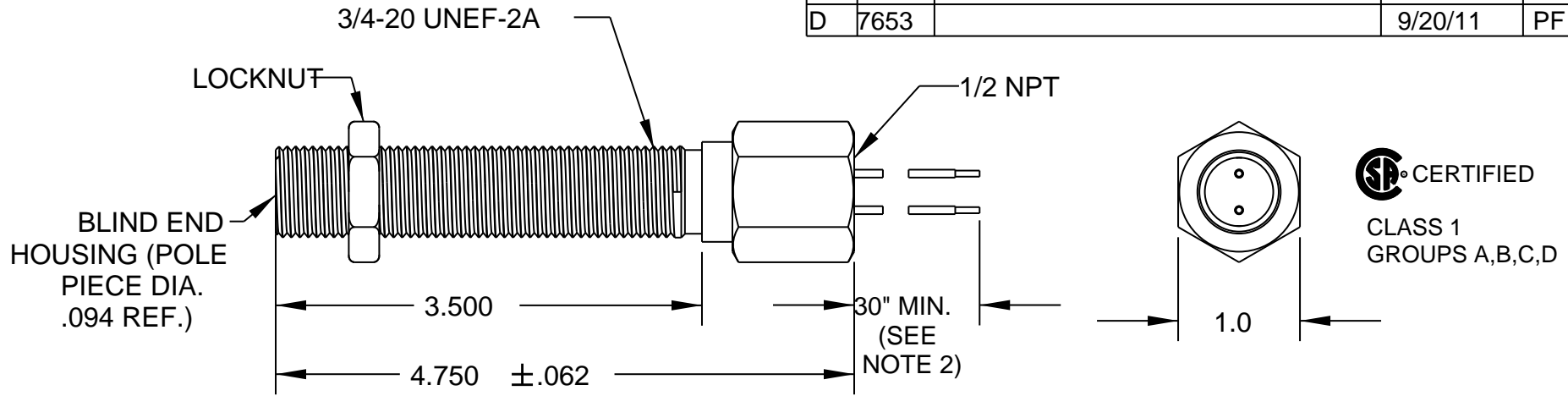


REV	ECN	DESCRIPTION	DATE	DR	CK
B	1872		1/16/95	KP	LOC
C	2236		3/3/99	KP	LOC
D	7653		9/20/11	PF	MG

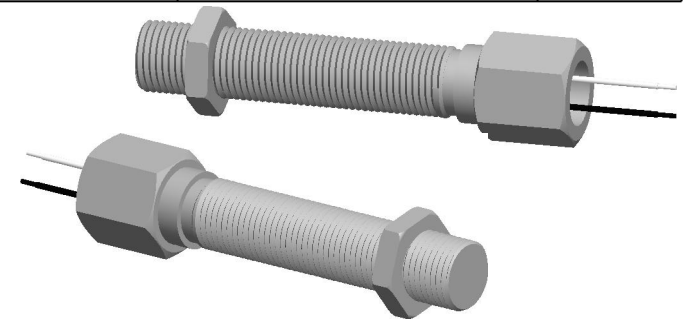


SP CERTIFIED
CLASS 1
GROUPS A,B,C,D

TEMPERATURE RANGE	OUTPUT VOLTAGE PEAK TO PEAK	DC RESISTANCE OHMS	INDUCTANCE MILLIHENRYS	OUTPUT CONNECTOR	INSULATION RESISTANCE	NET WEIGHT
-100 ° F to +200 ° F MAX. AMBIENT OR MTG. TEMP	23-33 VOLTS (SEE NOTE 1)	170-210 AT 75 ° F	29 NOM.	NO.18 AWG LEADS (SEE NOTE 2)	100 MEGOHMS MIN. AT 500 VDC, COIL TO HOUSING	7.2 OZ. AVG.

NOTES:

- 1- TESTED AT 1000 INCHES/SECOND WITH AN 20 PITCH, 30 TOOTH GEAR, 0.005" CLEARANCE AND 100,000 OHMS.
- 2- WITH APPROACH OF FERROUS METAL, WHITE LEAD IS POSITIVE WITH RESPECT TO BLACK LEAD.
- 3- UP TO 100 ft. OPTIONAL.



CONSTRUCTION:

HOUSING ----- 303 STAINLESS STEEL
POTTING ----- EPOXY RESIN

		THIRD ANGLE PROJECTION	Sheet 1 of 1
DYNALCO			
MODEL	M318	DRAWN	PF
PATH	MPROD\PICKUPS\M318	APPROVED	HM
TITLE OUTLINE AND SPECIFICATIONS M318 MAGNETIC PICKUP			
DATE	04/22/86	REV	D
		A	800-0318

TOLERANCES		
FRACT.	DEC.	ANGLES
±1/64	.XXX±.005	±1/2°
	.XX±.01	

MATERIAL

FINISH

THIS DOCUMENT, ALL INFORMATION CONTAINED IN AND ALL INFORMATION RELATED TO THE PROPERTY OF DYNALCO CONTROLS, IS CONFIDENTIAL TO IT AND NO PART THEREOF NOR ANY SUBSTANTIAL INFORMATION MAY BE COPIED, DISSEMINATED OR USED IN ANY MANNER WHATSOEVER WITHOUT THE WRITTEN CONSENT OF DYNALCO AND IS TO BE RETURNED TO DYNALCO UPON REQUEST.