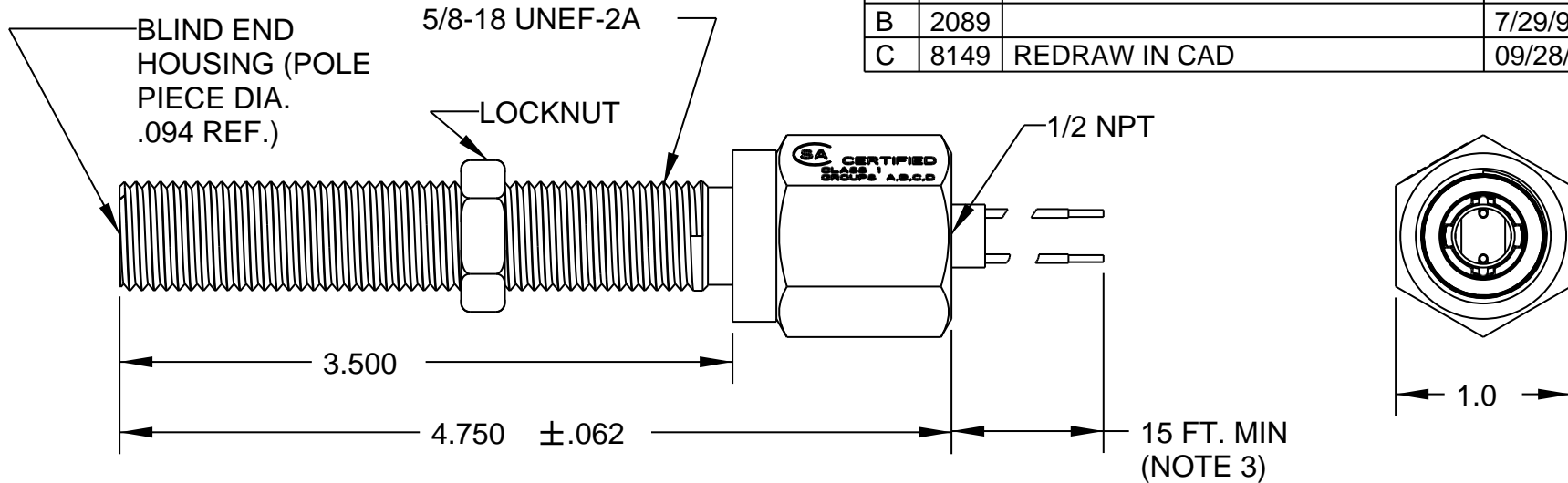


REV	ECN	DESCRIPTION	DATE	DR	CK
A	1872	REDRAW	1/16/95	KP	LOC
B	2089		7/29/97	KP	LOC
C	8149	REDRAW IN CAD	09/28/12	PF	MG



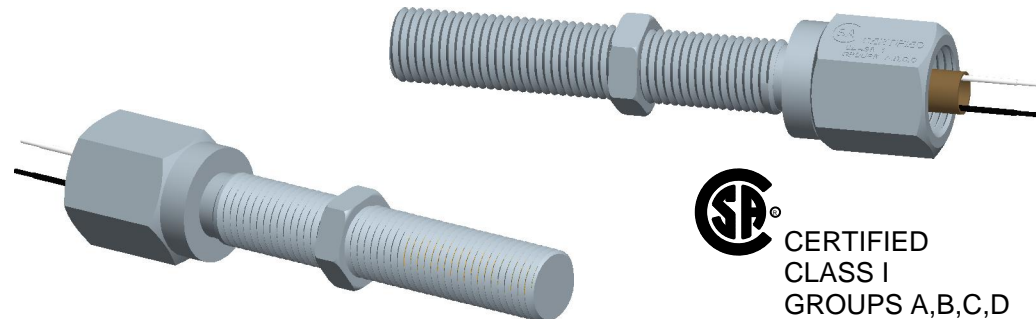
TEMPERATURE RANGE	OUTPUT VOLTAGE PEAK TO PEAK	DC RESISTANCE OHMS	INDUCTANCE MILLIHENRYS	OUTPUT CONNECTOR	INSULATION RESISTANCE	NET WEIGHT
-65 ° F to +250 ° F	23-33 VOLTS (SEE NOTE 1)	170-210 AT 75 ° F	29 NOM.	NO.18 AWG TEFLON LEADS (SEE NOTE 2)	100 MEGOHMS MIN. AT 500 VDC, COIL TO HOUSING	6.2 OZ. AVG.

NOTES:

- 1- TESTED AT 1000 INCHES/SECOND WITH AN 20 PITCH, 30 TOOTH GEAR, 0.005" CLEARANCE AND 100 KOHMS.
- 2- WITH APPROACH OF FERROUS METAL, WHITE LEAD IS POSITIVE WITH RESPECT TO BLACK LEAD.
- 3- LEAD WIRE TEMPERATURE: 400 ° F MAX.

CONSTRUCTION:

HOUSING ----- 303 STAINLESS STEEL
 POTTING ----- EPOXY RESIN



THIS DOCUMENT, ALL INFORMATION CONTAINED IN AND ALL INFORMATION RELATED TO THE PROPERTY OF DYNALCO CONTROLS, IS CONFIDENTIAL TO IT AND NO PART THEREOF NOR ANY SUBSTANTIAL INFORMATION MAY BE COPIED, DISSEMINATED OR USED IN ANY MANNER WHATSOEVER WITHOUT THE PRIOR WRITTEN CONSENT OF DYNALCO AND IS TO BE RETURNED TO DYNALCO UPON REQUEST.

TOLERANCES	ANGLES
FRACT. DEC.	±1/2°
±1/64 .XXX±.005	
.XX±.01	

MATERIAL
 FINISH

THIRD ANGLE PROJECTION		Sheet 1 of 1	
DYNALCO			
MODEL	M219	DRAWN	PF
PATH	MPROD\PICKUPS\M219	APPROVED	HM
TITLE MAGNETIC PICKUP MODEL M219			
DATE	10/06/92	A	800-0219
REV	C		