

4

3

2

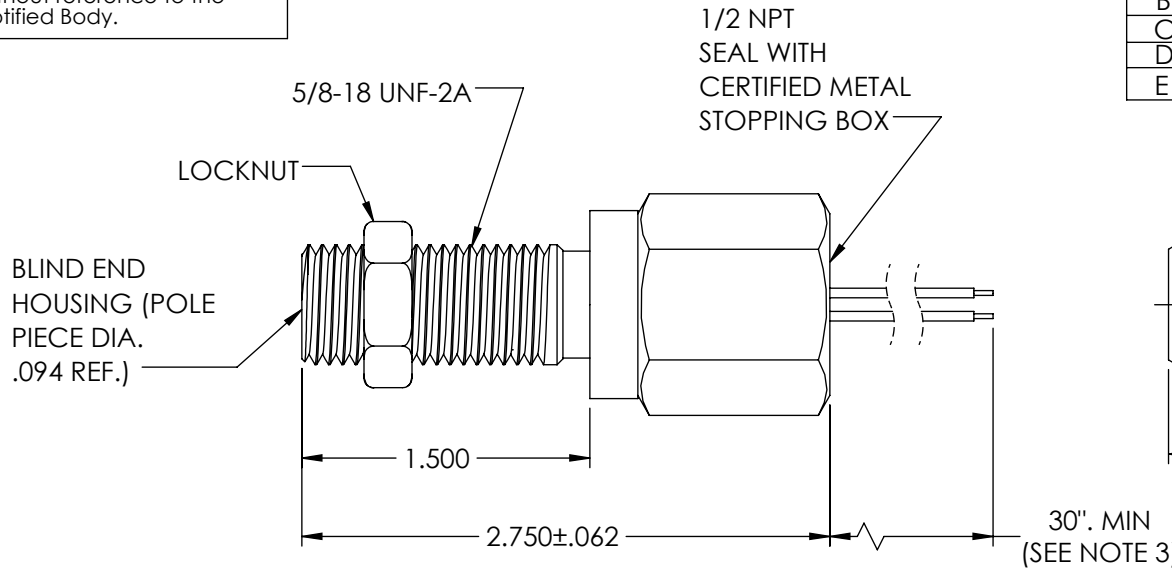
1

**SCHEDULE DRAWING**  
 No modifications permitted without reference to the Notified Body.

REV	ECN	DESCRIPTION	DATE	DR	CK
A	1870		01/06/95	KP	LOC
B	2611	ADD ATEX NOTES	01/18/11	PF	DW
C	8657	ADD ATEX GB NOTE. REDRAW IN CAD	08/28/13	PF	AM
D	12695	ADD UKCA LOGO	07/05/23	PC	PV
E	13098	ADD CML 23UKEX1179X	02/12/24	PC	PV

D

D



CLASS I, GP. A,B,C & D.  
 CLASS II, GP. E, F & G.



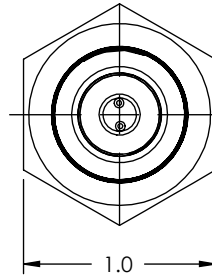
CERTIFIED CLASS I GROUPS A,B,C,D



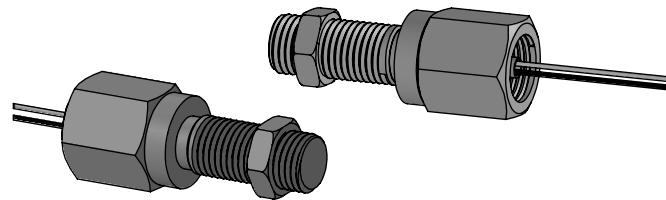
ATEX CERTIFIED  
 2776 II 2 G  
 Ex d IIC T6 Gb  
 LCIE 04 ATEX 6019X  
 CML 23UKEX1179X



CA 2503



TEMPERATURE RANGE	OUTPUT VOLTAGE (SEE NOTE 1)	DC RESISTANCE AT 75 °F	INDUCTANCE AT 1 KHZ	OUTPUT LEADS (SEE NOTE 2)	INSULATION RESISTANCE AT 500 VDC
-100 °F TO +200 °F	23-33V P-P	170-210 OHMS	29MH. NOM.	AWG 18 UL 1015	100 MEGOHMS MIN. COIL TO HOUSING



INSTRUMENT OR INSTALLATION MUST LIMIT GENERATED VOLTAGE TO 95V RMS (270 VOLTS PEAK TO PEAK) AND MAX. CURRENT TO 0.05 AMPS.

**NOTES:**

- TESTED AT 1000 INCHES/SECOND WITH AN 20 PITCH, 30 TOOTH GEAR, 0.005" CLEARANCE AND 100 KOHMS.
- WITH APPROACH OF FERROUS METAL, WHITE LEAD IS POSITIVE WITH RESPECT TO BLACK LEAD.
- LEAD LENGTH UP TO 100 FT. OPTIONAL

**CONSTRUCTION:**

HOUSING ----- 303 STAINLESS STEEL  
 POTTING ----- EPOXY RESIN

THIS DOCUMENT, ALL INFORMATION CONTAINED IN AND ALL INFORMATION RELATED TO, IS PROPERTY OF DYNALCO. IS CONFIDENTIAL TO IT AND NO PART THEREOF NOR ANY SUCH INFORMATION MAY BE COPIED, DISSEMINATED OR USED IN ANY MANNER WHATSOEVER WITHOUT THE PRIOR WRITTEN CONSENT OF DYNALCO AND IS TO BE RETURNED TO DYNALCO UPON REQUEST.

UNLESS OTHERWISE SPECIFIED		THIRD ANGLE PROJECTION	
DIMENSIONS ARE IN INCHES DIMENSIONAL TOLERANCES: FRACTIONAL ± 1/64 ANGULAR: ± 1/2° XX ± 0.01 XXX ± 0.005		<b>DYNALCO</b> ®	
DATE: 12/03/80	MODEL: M180	DRAWN: PF	
MATERIAL:	PATH: N:\PROD\PICKUPS\M180	APPROVED: HM	
FINISH:	TITLE: OUTLINE AND SPECIFICATIONS M180 U.L. LISTED MAGNETIC PICKUP	SIZE: A	REV: E
DO NOT SCALE DRAWING	SCALE 1:1	WEIGHT	SHEET 1 OF 1

A

A

4

3

2

1