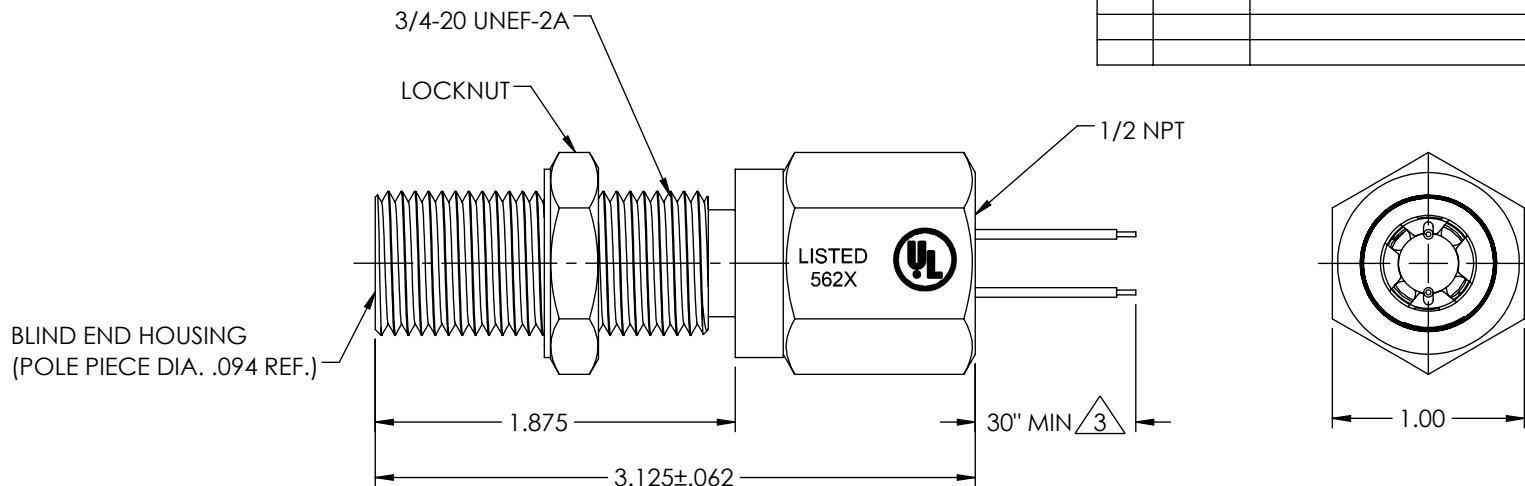


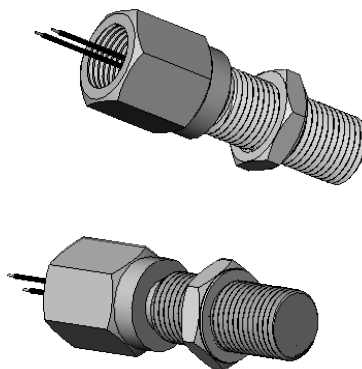
REV	ECN	REVISION RECORD	DATE	DR	CK
A	7653	REDRAW	09/20/2011	PF	MG
B	12089	ADDED CSA MARKING	07/23/2021	SS	PV



LISTED WITH
UNDERWRITERS
LABORATORIES, INC.
CLASS I, GP A, B, C, D.
CLASS II GP E, F, G.


 CERTIFIED
CLASS 1
GROUPS A, B, C, D.

TEMPERATURE RANGE	OUTPUT VOLTAGE PEAK TO PEAK	DC RESISTANCE OHMS	INDUCTANCE MILLIHENRYS	OUTPUT CONNECTOR	INSULATION RESISTANCE	NET WEIGHT
-100° F TO +200° F MAX. AMBIENT OR MTG. TEMP	23-33 VOLTS (SEE NOTE 1)	170-210 AT 75° F	29 NOM.	NO.18 AWG LEADS (SEE NOTE 2)	100 MEGOHMS MIN. AT 500 VDC, COIL TO HOUSING	5.2 OZ. AVG.



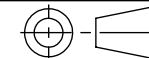
INSTRUMENT OR INSTALLATION MUST
LIMIT GENERATED VOLTAGE TO
95V RMS (270 VOLTS PEAK TO PEAK)
AND MAX. CURRENT TO 0.05 AMPS.

NOTES:

- TESTED AT 1000 INCHES/SECOND WITH AN 20 PITCH, 30 TOOTH GEAR, .005" CLEARANCE AND 100,000 OHMS.
 - WITH APPROACH OF FERROUS METAL, WHITE LEAD IS POSITIVE WITH RESPECT TO BLACK LEAD.
-  UP TO 100 FT. OPTIONAL.

CONSTRUCTION:
HOUSING ----- 303 STAINLESS STEEL
POTTING ----- EPOXY RESIN

THIS DOCUMENT, ALL INFORMATION CONTAINED IN AND ALL INFORMATION RELATED TO, IS PROPERTY OF DYNALCO. IS CONFIDENTIAL TO IT AND NO PART THEREOF NOR ANY SUCH INFORMATION MAY BE COPIED, DISSEMINATED OR USED IN ANY MANNER WHATSOEVER WITHOUT THE PRIOR WRITTEN CONSENT OF DYNALCO AND IS TO BE RETURNED TO DYNALCO UPON REQUEST.

UNLESS OTHERWISE SPECIFIED		 THIRD ANGLE PROJECTION	
DIMENSIONS ARE IN INCHES DIMENSIONAL TOLERANCES: FRACTIONAL ± 1/64 ANGULAR: ± 1/2° XX ± 0.010 XXX ± 0.005			
DATE: 10/11/1978	MODEL: M140	DRAWN: PF	APPROVED: HM
MATERIAL:	TITLE: OUTLINE AND SPECIFICATIONS M140 U.L. LISTED MAGNETIC PICKUP		
FINISH:	SIZE: A	DWG. NO.: 800-0140	REV: B
DO NOT SCALE DRAWING	SCALE	WEIGHT	SHEET 1 OF 1