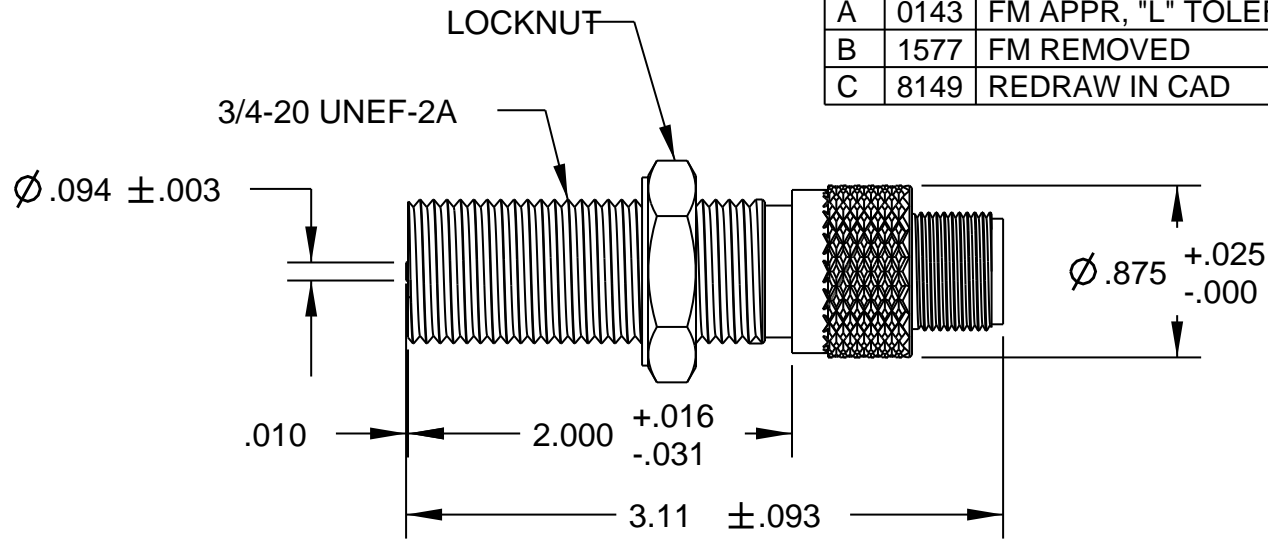


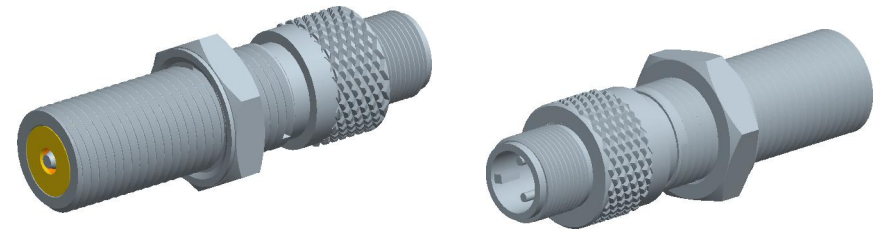
REV	ECN	DESCRIPTION	DATE	DR	CK
A	0143	FM APPR, "L" TOLERACE ADDED	09/21/12	KP	LOC
B	1577	FM REMOVED	12/18/91	KP	LOC
C	8149	REDRAW IN CAD	09/21/12	PF	MG



TEMPERATURE RANGE	OUTPUT VOLTAGE PEAK TO PEAK	DC RESISTANCE OHMS	INDUCTANCE MILLIHENRYS	OUTPUT CONNECTOR	INSULATION RESISTANCE	NET WEIGHT
-65 ° F to +225 ° F	13-17 VOLTS (SEE NOTE 1) 7V TYP AT 50 IPS	230-280 AT 75 ° F	19-25 AT 1KHz	MATES WITH MS3106A-10SL-4S (SEE NOTE 2)	100 MEGOHMS MIN. AT 500 VDC, COIL TO HOUSING	3.5 OZ. AVG.

NOTES:

- 1- TESTED AT 1000 INCHES/SECOND WITH A 16 PITCH, 40 TOOTH GEAR, 0.005" CLEARANCE AND 100,000 OHMS LOAD SHUNTED BY 250 PF.
- 2- WITH APPROACH OF FERROUS METAL, PIN "B" IS POSITIVE WITH RESPECT TO PIN "A".



CONSTRUCTION:

HOUSING ----- 303 STAINLESS STEEL
 POLE PIECE - 416 STAINLESS STEEL
 POTTING ----- EPOXY RESIN

		THIRD ANGLE PROJECTION	Sheet 1 of 1
MODEL	M139	DRAWN	PF
PATH	MPROD\PICKUPS\M139	APPROVED	LOC
TITLE MAGNETIC PICKUP, MODEL M139			
DATE	04/10/78	REV	C
		A	800-0139

TOLERANCES	FRACT.	DEC.	ANGLES
	±1/64	.XXX±.005	±1/2°
		.XX±.01	
MATERIAL			
FINISH			

THIS DOCUMENT, ALL INFORMATION CONTAINED IN AND ALL INFORMATION RELATED TO THE PROPERTY OF DYNALCO CONTROLS, IS CONFIDENTIAL TO IT AND NO PART THEREOF NOR ANY SUBSTANTIAL INFORMATION MAY BE COPIED, DISSEMINATED OR USED IN ANY MANNER WHATSOEVER WITHOUT THE PRIOR WRITTEN CONSENT OF DYNALCO AND IS TO BE RETURNED TO DYNALCO UPON REQUEST.